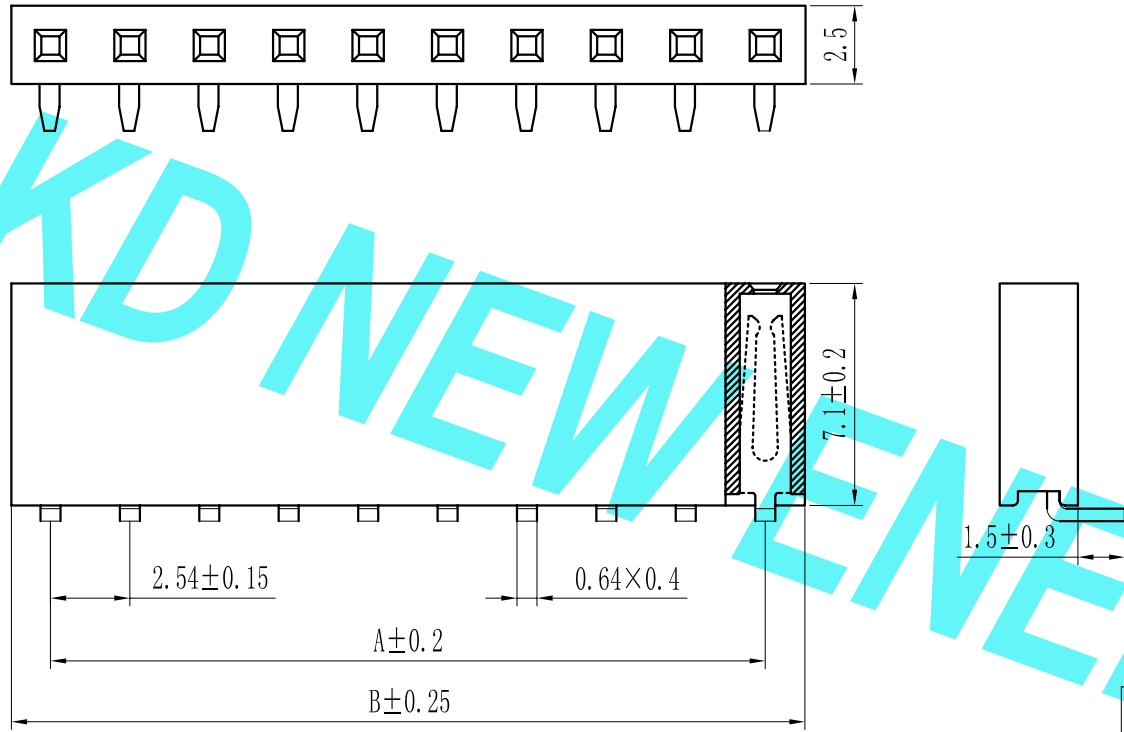


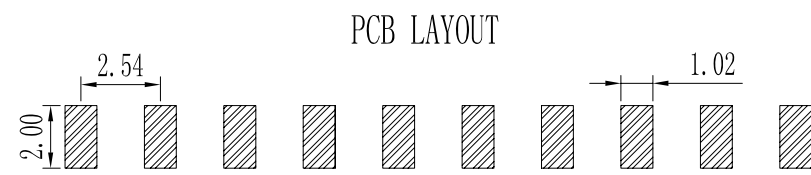
ROHS

For reference only

| Pin数 | 尺寸A | 尺寸B |
|------|-------|--------|
| 1x2 | 2.54 | 5.58 |
| 1x3 | 5.08 | 8.12 |
| 1x4 | 7.62 | 10.66 |
| 1x5 | 10.16 | 13.20 |
| 1x6 | 12.70 | 15.74 |
| 1x7 | 15.24 | 18.28 |
| 1x8 | 17.78 | 20.82 |
| 1x9 | 20.32 | 23.36 |
| 1x10 | 22.86 | 25.90 |
| 1x11 | 25.40 | 28.44 |
| 1x12 | 27.94 | 30.98 |
| 1x13 | 30.48 | 33.52 |
| 1x14 | 33.02 | 36.06 |
| 1x15 | 35.56 | 38.60 |
| 1x16 | 38.10 | 41.14 |
| 1x17 | 40.64 | 43.68 |
| 1x18 | 43.18 | 46.22 |
| 1x19 | 45.72 | 48.76 |
| 1x20 | 48.26 | 51.30 |
| 1x21 | 50.80 | 53.84 |
| 1x22 | 53.34 | 56.38 |
| 1x23 | 55.88 | 58.92 |
| 1x24 | 58.42 | 61.46 |
| 1x25 | 60.96 | 64.00 |
| 1x26 | 63.50 | 66.54 |
| 1x27 | 66.04 | 69.08 |
| 1x28 | 68.58 | 71.62 |
| 1x29 | 71.12 | 74.16 |
| 1x30 | 73.66 | 76.70 |
| 1x31 | 76.20 | 79.24 |
| 1x32 | 78.74 | 81.78 |
| 1x33 | 81.28 | 84.32 |
| 1x34 | 83.82 | 86.86 |
| 1x35 | 86.36 | 89.40 |
| 1x36 | 88.90 | 91.94 |
| 1x37 | 91.44 | 94.48 |
| 1x38 | 93.98 | 97.02 |
| 1x39 | 96.52 | 99.56 |
| 1x40 | 99.06 | 102.10 |



Specification:
 Current Rating : 3AMP
 Temperature Range : -40°Cto+105°C
 Contact Resistance : 20mΩ Max
 Insulation Resistance : 1000MΩ Min
 Withstanding Voltage : AC 1000V
 Material:
 Insulator : Polyester (UL94V-0)
 Standard:PA6T/LCP
 Contact: Brass
 Plating : Au or Sn Over 50u" Ni



F 25 9S-XXX XX-XX-X-XXX

| | | | | |
|---|---|---|---|---|
| ① Series No: P=Pin Header F=Female Header B=Box Header E=Ejector Header | ② Pitch: 08=0.80 10=1.00 12=1.27 20=2.00 25=2.54 39=3.96 50=5.08 | ③ Tail&Mounting Style: 90=Right Angle DIP Type 9S=Straight SMT Type 0D=Straight DIP Type 0S=horizontal SMT Type | ④ No. of Pins: Single Row Double Row 101=1*1Pin 201=2*1Pin 102=1*2Pin 202=2*2Pin ! ! ! 140=1*40pin 240=2*40pin | ⑤ Insulator Color: A:Black B:Brom C:Red D:Orange E:Yellow F:Green G:Blue H:Violet J:Gray K:White P:Light Blue |
| ⑥ Material Type: A=PBT B-PA46 C-PA6T D-PA9T E-LCP | ⑦ Plating Type: 0*-Sn-Au 1*-Ni 2*-Sn 3*-Matte-Tin 5*-Au 0A-Sn-Au 1u" 0F-Sn-Au 10u" 5A-Au 1u" 0B-Sn-Au 2u" 0C-Sn-Au 15u" 5B-Au 2u" 0C-Sn-Au 3u" 0H-Sn-Au 30u" 5C-Au 3u" 0D-Sn-Au 4u" 0I-Sn-Au 40u" ! 0E-Sn-Au 5u" 0J-Sn-Au 50u" 5J-Au 50u" | ⑧ RoHS Request: 0:No Request 1:RoHS 2:HF(Halogen Free) | ⑨ Customer Code | |

| | | | | | | | | | | | | | | |
|------|--|-----------------|--|------|----------|----------|--------------------|------------|------|------|--|-----------|---|------------|
| REV. | | REVISION RECORD | | DATE | SIZE: A4 | UNIT: MM | GENERAL TOLERANCES | SCALE: 1:1 | NAME | DATE | <p>东莞市康导新能源科技有限公司 DONGGUANG KD NEW ENERGY TECHNOLOGY CO., LTD. Web: www.dgconne.com Tel: 0769-85337633 Email: 2850175986@qq.com Fax: 0769-85392827</p> | PART. NO: | KDFH-0136 | |
| | | | | | | | LINEAR | APPROVED | | | | DWG. NO: | ENDE1136 | |
| | | | | | | | ANGLES | DESIGNER | | | | TITLE: | Pitch2.54mm Female Header, Single Row, Plastic Height 7.1mm, SMT Type(Y) | |
| | | | | | | | 0.00±0.15 | DRAWN | | | | REV: | AO | SHEET: 1/1 |