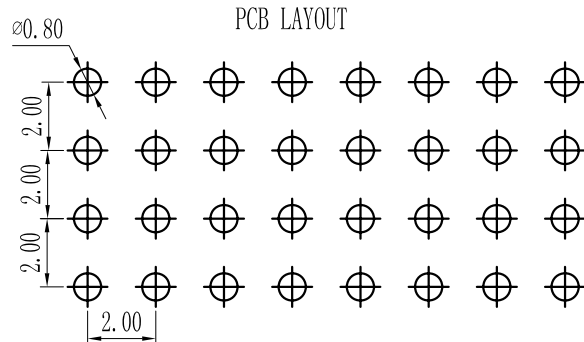
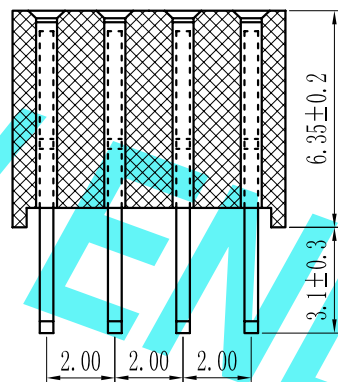
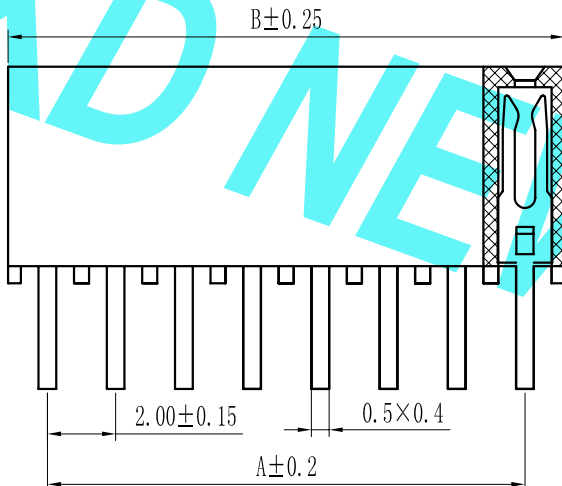
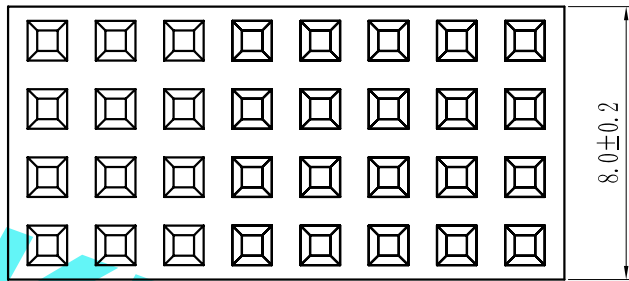


ROHS

For reference only

Pin数	尺寸A	尺寸B
4×2	2.0	4.5
4×3	4.0	6.5
4×4	6.0	8.5
4×5	8.0	10.5
4×6	10.0	12.5
4×7	12.0	14.5
4×8	14.0	16.5
4×9	16.0	18.5
4×10	18.0	20.5
4×11	20.0	22.5
4×12	22.0	24.5
4×13	24.0	26.5
4×14	26.0	28.5
4×15	28.0	30.5
4×16	30.0	32.5
4×17	32.0	34.5
4×18	34.0	36.5
4×19	36.0	38.5
4×20	38.0	40.5
4×21	40.0	42.5
4×22	42.0	44.5
4×23	44.0	46.5
4×24	46.0	48.5
4×25	48.0	50.5
4×26	50.0	52.5
4×27	52.0	54.5
4×28	54.0	56.5
4×29	56.0	58.5
4×30	58.0	60.5
4×31	60.0	62.5
4×32	62.0	64.5
4×33	64.0	66.5
4×34	66.0	68.5
4×35	68.0	70.5
4×36	70.0	72.5
4×37	72.0	74.5
4×38	74.0	76.5
4×39	76.0	78.5
4×40	78.0	80.5



Specification:  
 Current Rating : 1.5AMP  
 Temperature Range : -40°Cto+105°C  
 Contact Resistance : 20mΩ Max  
 Insulation Resistance : 1000MΩ Min  
 Withstanding Voltage : AC 500V  
 Material:  
 Insulator : Polyester (UL94V-0)  
 Standard:PBT/PA6T/LCP  
 Contact: Brass  
 Plating : Au or Sn Over 50u" Ni

F 20 0D-XXX X X-XX-X-XXX

① Series No: P=Pin Header F=Female Header B=Box Header E=Ejector Header	② Pitch: 08=0.80 10=1.00 12=1.27 20=2.00 25=2.54 39=3.96 50=5.08	③ Tail&Mounting Style: 9D=Right Angle DIP Type 9S=Straight SMT Type 0D=Straight DIP Type 0S=horizontal SMT Type	④ No. of Pins: Single Row Double Row 101=1*1Pin 201=2*1Pin 102=1*2Pin 202=2*2Pin ! ! ! 140=1*40pin 240=2*40pin	⑤ Insulator Color: A:Black B:Brom C:Red D:Orange E:Yellow F:Green G:Blue H:Violet J:Gray K:White P:Light Blue
⑥ Material Type: A-PBT B-PA46 C-PA6T D-PA9T E-LCP	⑦ Plating Type: 0*-Sn-Au 1*-Ni 2*-Sn 3*-Matte-Tin 5*-Au 0A-Sn-Au 1u" 0F-Sn-Au 10u" 5A-Au 1u" 0B-Sn-Au 2u" 0G-Sn-Au 15u" 5B-Au 2u" 0C-Sn-Au 3u" 0H-Sn-Au 30u" 5C-Au 3u" 0D-Sn-Au 4u" 0I-Sn-Au 40u" ! 0E-Sn-Au 5u" 0J-Sn-Au 50u" 5J-Au 50u"	⑧ RoHS Request: 0:No Request 1:RoHS 2:HF(Halogen Free)	⑨ Customer Code	

REV.	REVISION RECORD	DATE	UNIT: MM	GENERAL TOLERANCES		SCALE: 1:1	NAME	DATE
				LINEAR	ANGLES			
				0.00 ± 0.15	X° REF ± 6°			
				0.00 ± 0.08	X° X' ± 2°			

**东莞市康导新能源科技有限公司**  
 DONGGUANG KD NEW ENERGY TECHNOLOGY CO., LTD.  
 Web: www.dgconne.com Tel: 0769-85337633  
 Email: 2850175986@qq.com Fax: 0769-85392827

TITLE:  
 Pitch2.0mm Female Header, Quad Row,  
 Plastic Height 6.35mm, DIP(Y)

PART. NO:	KDFH-0098
DWG. NO:	ENDE1098
REV:	AO
SHEET:	1/1