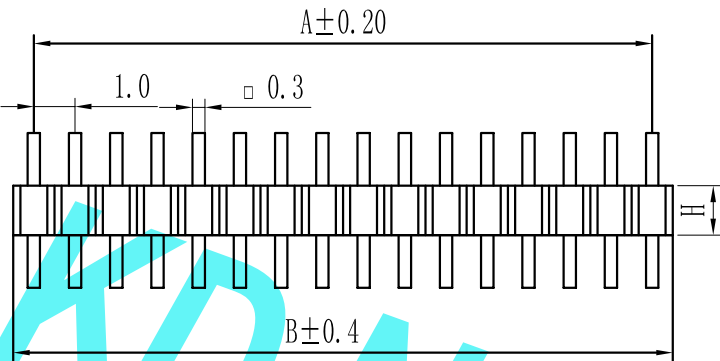


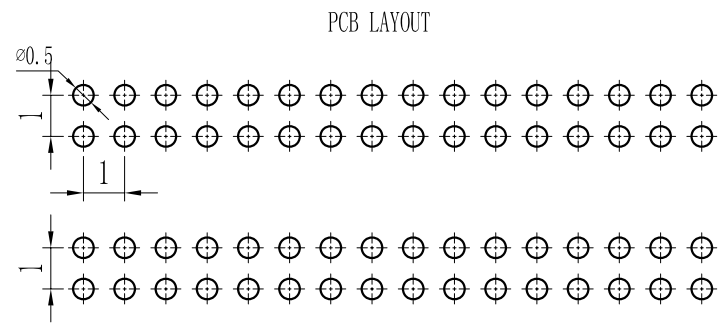
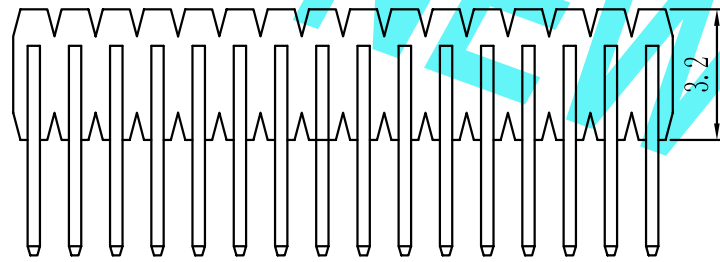
ROHS

For reference only

Pin数	尺寸A	尺寸B
2x2	1.0	2.0
2x3	2.0	3.0
2x4	3.0	4.0
2x5	4.0	5.0
2x6	5.0	6.0
2x7	6.0	7.0
2x8	7.0	8.0
2x9	8.0	9.0
2x10	9.0	10.0
2x11	10.0	11.0
2x12	11.0	12.0
2x13	12.0	13.0
2x14	13.0	14.0
2x15	14.0	15.0
2x16	15.0	16.0
2x17	16.0	17.0
2x18	17.0	18.0
2x19	18.0	19.0
2x20	19.0	20.0
2x21	20.0	21.0
2x22	21.0	22.0
2x23	22.0	23.0
2x24	23.0	24.0
2x25	24.0	25.0
2x26	25.0	26.0
2x27	26.0	27.0
2x28	27.0	28.0
2x29	28.0	29.0
2x30	29.0	30.0
2x31	30.0	31.0
2x32	31.0	32.0
2x33	32.0	33.0
2x34	33.0	34.0
2x35	34.0	35.0
2x36	35.0	36.0
2x37	36.0	37.0
2x38	37.0	38.0
2x39	38.0	39.0
2x40	39.0	40.0
2x41	40.0	41.0
2x42	41.0	42.0
2x43	42.0	43.0
2x44	43.0	44.0
2x45	44.0	45.0
2x46	45.0	46.0
2x47	46.0	47.0
2x48	47.0	48.0
2x49	48.0	49.0
2x50	49.0	50.0



Height
H=1.0mm
H=1.5mm



Specification:  
 Current Rating : 0.75AMP  
 Temperature Range : -40°Cto+105°C  
 Contact Resistance : 30mΩ Max  
 Insulation Resistance : 1000MΩ Min  
 Withstanding Voltage : AC 500V  
 Material:  
 Insulator : Polyester (UL94V-0)  
 Standard:PBT/PA6T/LCP  
 Contact: Brass  
 Plating : Au or Sn Over 50u" Ni

<p><b>P 10 9D-XXX X X-XX-X-XXX</b></p>				
① Series No: P=Pin Header F=Female Header B=Box Header E=Ejector Header	② Pitch: 08=0.80 10=1.00 12=1.27 20=2.00 25=2.54 39=3.96 50=5.08	③ Tail&Mounting Style: 9D=Right Angle DIP Type 9S=Straight SMT Type 0D=Straight DIP Type 0S=Horizontal SMT Type	④ No. of Pins: Single Row 101=1*1Pin 102=1*2Pin 140=1*40pin	⑤ Insulator Color: A:Black B:Brown C:Red D:Orange E:Yellow F:Green G:Blue H:Violet J:Gray K:White P:Light Blue
⑥ Material Type: A-PBT B-PA46 C-PA6T D-PA9T E-LCP	⑦ Plating Type: 0*-Sn-Au 1*-Ni 2*-Sn 3*-Matte-Tin 5*-Au 0A-Sn-Au 1u" 0F-Sn-Au 10u" 5A-Au 1u" 0B-Sn-Au 2u" 0G-Sn-Au 15u" 5B-Au 2u" 0C-Sn-Au 3u" 0H-Sn-Au 30u" 5C-Au 3u" 0D-Sn-Au 4u" 0I-Sn-Au 40u" : 0E-Sn-Au 5u" 0J-Sn-Au 50u" 5J-Au 50u"	⑧ RoHS Request: 0:No Request 1:RoHS 2:HF(Halogen Free)	⑨ Customer Code	

REV.	REVISION RECORD	DATE	UNIT: MM	GENERAL TOLERANCES		SCALE: 1:1	NAME	DATE
				LINEAR	ANGLES			
				0.0±0.25	X° REF±6°	APPROVED		
				0.00±0.15	X° ±3°	DESIGNER		
				0.000±0.08	X° X'±2°	DRAWN		

**东莞市康导新能源科技有限公司**  
 DONGGUANG KD NEW ENERGY TECHNOLOGY CO.,LTD.  
 Web: www.dgconne.com Tel: 0769-85337633  
 Email: 2850175986@qq.com Fax: 0769-85392827

TITLE:  
Pitch1.0mm Pin Header,Single Plastic,  
Dual Row,Right Angle Type

PART. NO:	KDPH-0018
DWG. NO:	ENDE0018
REV:	AO
SHEET:	1/1