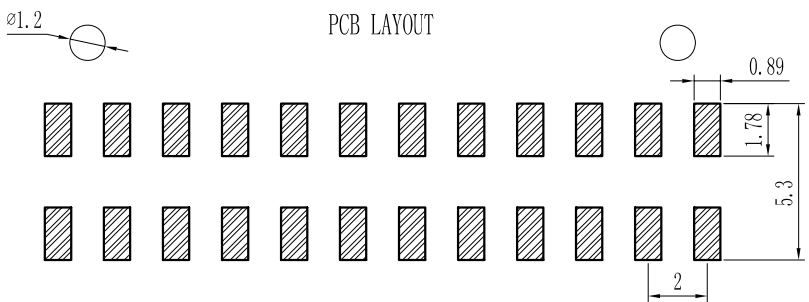
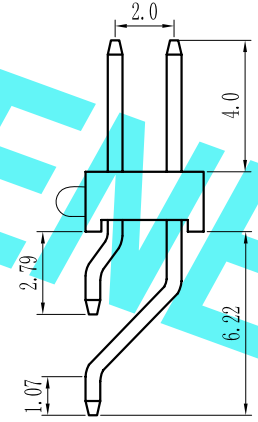
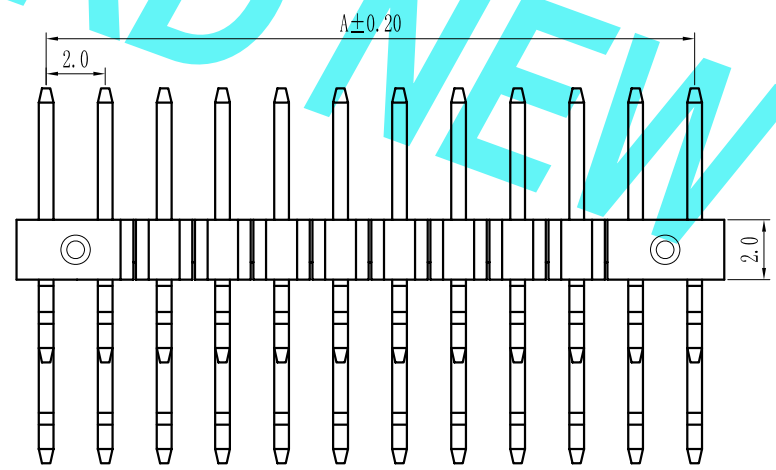
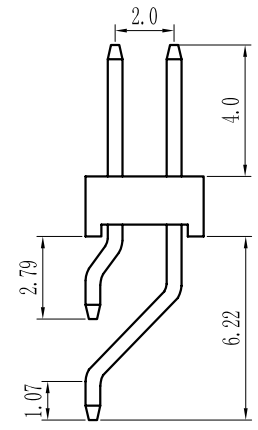
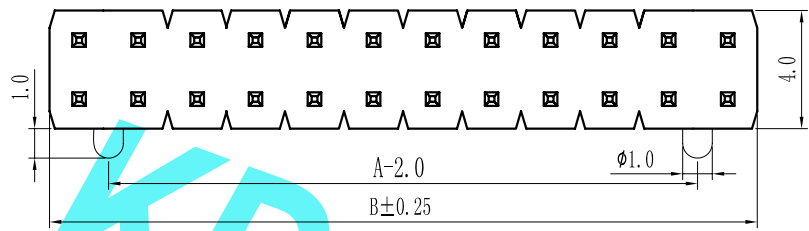


ROHS

For reference only

Pin数	尺寸A	尺寸B
2x1	-	2.0
2x2	2.0	4.0
2x3	4.0	6.0
2x4	6.0	8.0
2x5	8.0	10.0
2x6	10.0	12.0
2x7	12.0	14.0
2x8	14.0	16.0
2x9	16.0	18.0
2x10	18.0	20.0
2x11	20.0	22.0
2x12	22.0	24.0
2x13	24.0	26.0
2x14	26.0	28.0
2x15	28.0	30.0
2x16	30.0	32.0
2x17	32.0	34.0
2x18	34.0	36.0
2x19	36.0	38.0
2x20	38.0	40.0
2x21	40.0	42.0
2x22	42.0	44.0
2x23	44.0	46.0
2x24	46.0	48.0
2x25	48.0	50.0
2x26	50.0	52.0
2x27	52.0	54.0
2x28	54.0	56.0
2x29	56.0	58.0
2x30	58.0	60.0
2x31	60.0	62.0
2x32	62.0	64.0
2x33	64.0	66.0
2x34	66.0	68.0
2x35	68.0	70.0
2x36	70.0	72.0
2x37	72.0	74.0
2x38	74.0	76.0
2x39	76.0	78.0
2x40	78.0	80.0
2x41	80.0	82.0
2x42	82.0	84.0
2x43	84.0	86.0
2x44	86.0	88.0
2x45	88.0	90.0
2x46	90.0	92.0
2x47	92.0	94.0
2x48	94.0	96.0
2x49	96.0	98.0
2x50	98.0	100.0
2x51	100.0	102.0
2x52	102.0	104.0



Specification:
 Current Rating : 1.5AMP
 Temperature Range : -40°Cto+105°C
 Contact Resistance : 20mΩ Max
 Insulation Resistance : 1000MΩ Min
 Withstanding Voltage : AC 500V
 Material:
 Insulator : Polyester (UL94V-0)
 Standard:PA6T/LCP
 Contact: Brass
 Plating : Au or Sn Over 50u" Ni

Height
 H=1.0mm, 1.5mm, 2.0mm, 3.0mm

P 20		OS-XXX		X X -XX -X -XXX	
① Series No:	② Pitch:	③ Tail&Mounting Style:	④ No. of Pins:	⑤ Insulator Color:	
P=Pin Header	08=0.80	90=Right Angle DIP Type	Single Row	A:Black B:Brown C:Red	
F=Female Header	10=1.00	95=Straight SMT Type	Double Row	D:Orange E:Yellow F:Green	
B=Box Header	12=1.27	00=Straight DIP Type	101=1*1Pin	201=2*1Pin	G:Blue H:Violet J:Gray
E=Ejector Header	20=2.00	05=Horizontal SMT Type	102=1*2Pin	202=2*2Pin	K:White P:Light Blue
	25=2.54		:	:	
	39=3.96		140=1*40pin	240=2*40pin	
	50=5.08				
⑥ Material Type:	⑦ Plating Type:	⑧ RoHS Request:	⑨ Customer Code		
A-PBT	0*-Sn-Au 1*-Ni 2*-Sn 3*-Matte-Tin 5*-Au	0:No Request			
B-PA66	0A-Sn-Au 1u" 0F-Sn-Au 10u" 5A-Au 1u"	1:RoHS			
C-PA6T	0B-Sn-Au 2u" 0G-Sn-Au 15u" 5B-Au 2u"	2:HF (Halogen Free)			
D-PA6T	0C-Sn-Au 3u" 0H-Sn-Au 30u" 5C-Au 3u"				
E-LCP	0D-Sn-Au 4u" 0I-Sn-Au 40u" ;				
	0E-Sn-Au 5u" 0J-Sn-Au 50u" 5J-Au 50u"				

REV.	REVISION RECORD	DATE	UNIT: MM	SIZE: A4	GENERAL TOLERANCES	SCALE: 1:1	NAME	DATE	<p>东莞市康导新能源科技有限公司 DONGGUANG KD NEW ENERGY TECHNOLOGY CO., LTD. Web: www.dgconne.com Tel: 0769-85337633 Email: 2850175986@qq.com Fax: 0769-85392827</p>	PART. NO:
					LINEAR	APPROVED				KDPH-0063
					ANGLES	DESIGNER				DWG. NO:
					0.00±0.15 X° ±3°	DRAWN				ENDE0063
					0.00±0.08 X° X'±2°				TITLE: Pitch2.00mm Pin Header, Single Plastic, Dual Row, Horizontal SMT Type	
									REV: AO SHEET: 1/1	